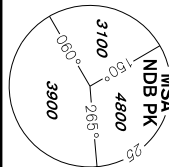
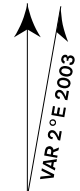
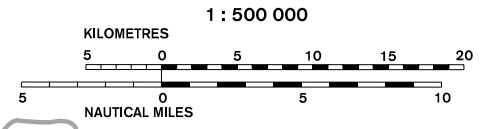


STANDARD ARRIVAL CHART INSTRUMENT (STAR) - ICAO

PARDUBICE
MTRR
MTR (reserve) 121,250



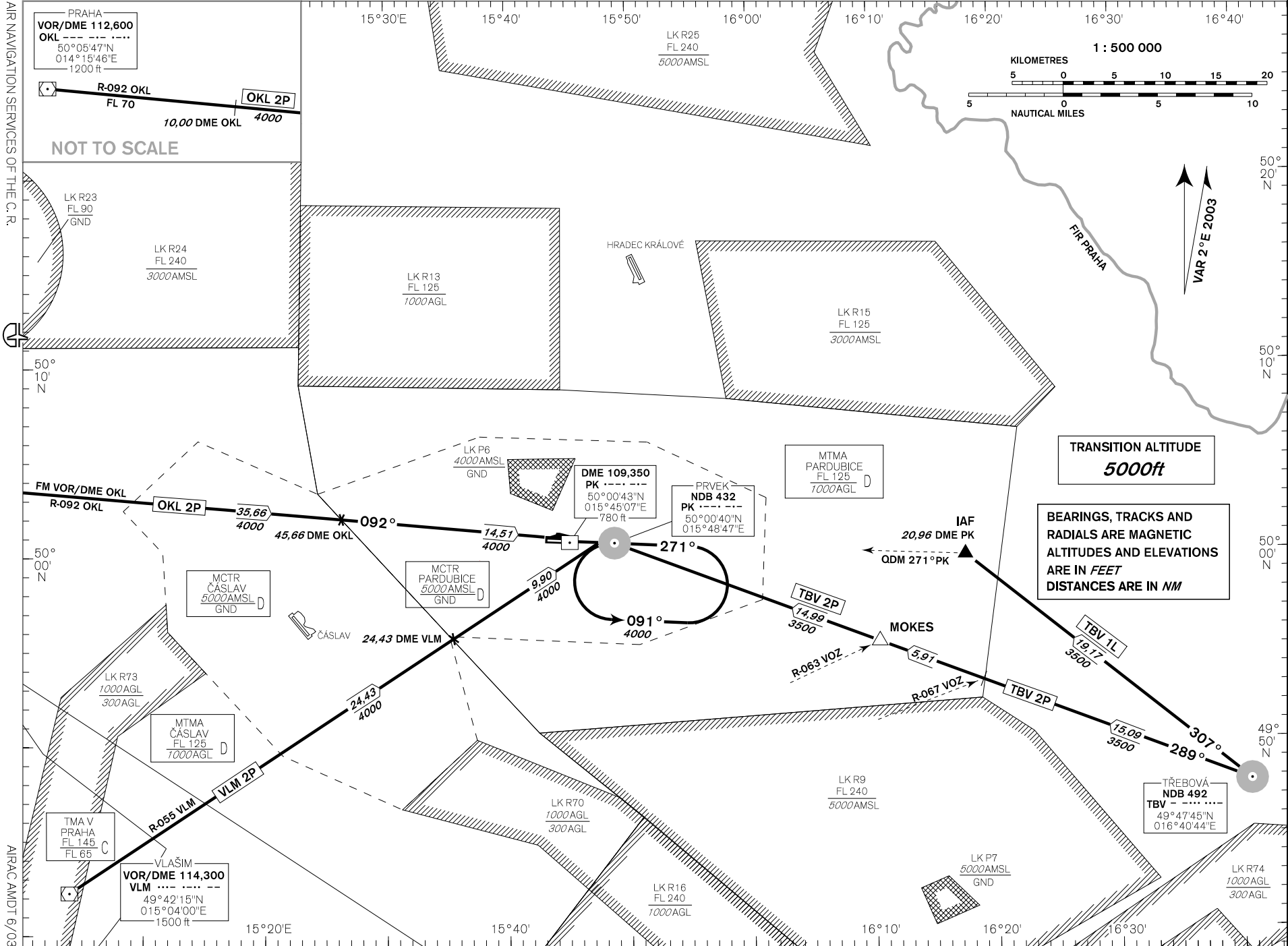
PARDUBICE
RWY 27



TRANSITION ALTITUDE
5000ft

BEARINGS, TRACKS AND
RADIALS ARE MAGNETIC
ALTITUDES AND ELEVATIONS
ARE IN FEET
DISTANCES ARE IN NM

change: withdrawn LKR40 - LKR43, new LKR70, LKR73 and LKR74



AIR NAVIGATION SERVICES OF THE C. R.

AIRAC AMDT 6/03

NOT TO SCALE